

July 2012

## Performance Analysis of 802.16/e for Image Transmission

Vivek Jaysukhlal Maradia

*Electronics & Communication Department V.V.P.Engineering Collage Rajkot, Gujarat, India.,*  
maradiavivek@gmail.com

Follow this and additional works at: <https://www.interscience.in/ijipvs>



Part of the [Robotics Commons](#), [Signal Processing Commons](#), and the [Systems and Communications Commons](#)

---

### Recommended Citation

Maradia, Vivek Jaysukhlal (2012) "Performance Analysis of 802.16/e for Image Transmission," *International Journal of Image Processing and Vision Science*: Vol. 1 : Iss. 1 , Article 13.  
Available at: <https://www.interscience.in/ijipvs/vol1/iss1/13>

This Article is brought to you for free and open access by Interscience Research Network. It has been accepted for inclusion in International Journal of Image Processing and Vision Science by an authorized editor of Interscience Research Network. For more information, please contact [sritampatnaik@gmail.com](mailto:sritampatnaik@gmail.com).

## Performance Analysis of 802.16/e for Image Transmission

Vivek Jaysukhlal Maradia  
 Electronics & Communication Department  
 V.V.P.Engineering Collage  
 Rajkot, Gujarat, India.  
 maradiavivek@gmail.com

**Abstract**—“This paper is designed and implement for modeling and simulation performance of image transmission based on Worldwide Interoperability for Microwave Access (Wi-MAX) using MATLAB/SIMULINK and hardware implementation via Xilinx Spartan - II based FPGA trainer model.”

**Keywords:** - Wi-MAX, Simulink , Spartan - II based FPGA trainer model , Wireless communication.

### I. INTRODUCTION

The IEEE Wi-MAX/ 802.16 is promising technology for broadband wireless-MAN network as it can provide high throughput over a long distances & can supports different QoS. In this paper we concentrate on wi-max physical layer protocol, it's basic functional block diagram initially we analyze wi-max protocol with the help of matlab simulink & achieve satisfactory result. In second stage of over proposed work code is loaded into Spartan - II based FPGA trainer model in xilinx.

Wi-max intends to combine the high data rate of WLAN and the range of 3G cellular networks to serve user with greater mobility at greater speed.

Wi-Fi devices operate in the unlicensed ISM band (Industrial Scientific and Medical Band) centered at 2.4GHz. This frequency band is also used by other devices. Hence the Wi-Fi devices are allocated a maximum power limit by FCC which limits their range or coverage, Wi-MAX was designed keeping in mind a WMAN. It is allocated a licensed frequency band and hence interference from other devices is relatively less. Correspondingly the range for WiMAX is more.

The development will be divided into 2 steps:

1. The physical layer of 802.16/e design & simulated matlab/simulink platform and we are transmitted any image. 2. The hardware output will be captured digitally in the Spartan -

II based FPGA trainer model in xilinx, this platform validated with the simulation in SIMULINK. Validation in the analog domain with help of spectrum analyzer at the system output.

### II. PROPOSE WI-MAX ARCHITECTURE AND SPECIFICATION

Physical layer set up the connection between the communicating devices and is responsible for transmitting the bit sequence. It also defines the type of modulation and demodulation as well as transmission power. WiMAX physical layer is based on the orthogonal frequency division multiplexing (OFDM). OFDM is a good choice of high speed data transmission, multimedia communication and digital video services. It even can maintain very fast data rate in a non line of sight condition and multipath environment. In the following subsection we provide a detailed description of Wi-MAX Physical layer.

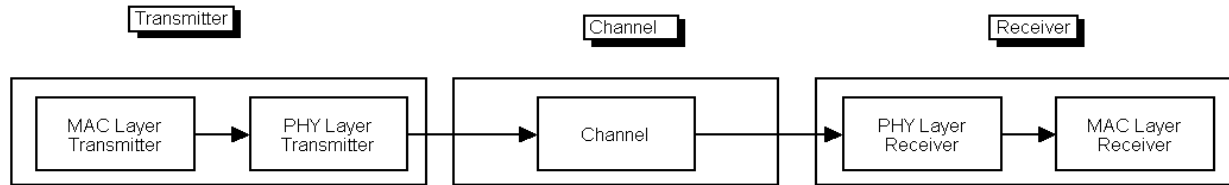
Figure shows the high level architecture of Wi-MAX transmitter and receiver. At the transmitter end first Data, MAC PDU, Randomizer, Block Encoder, Convolution encoder, Interleaver, IQ map per, OFDM modulation, and these all above block is useful for data transmission in wireless medium. At receiver block exact opposite process done at the receiver end. Here as a channel we are using Additive White Gaussian Noise (AWGN).

Randomizer is done according to FEC (Forward Error correction) block for all data except for FCH (Frame control Header). Its main function is to maintain data integrity.

An Additive white Gaussian noise (AWGN) channel model is used with Rayleigh fading to resemble the real world scenario. The transmitter and receiver are assumed to be in fixed positions and the channel coding is not used. The transmitted and received signals are considered to in perfect sync with each other in time and frequency. Losses

from feeder cables, joints, connectors, jumpers are not taken in consideration. it is useful for data transmission in wireless medium. At receiver block exact opposite process done at the

receiver end and Here as a channel we are using Additive White Gaussian Noise (AWGN).



### DSP/ FPGA HARDWARE SPECIFICATION AND LIMITATION OF DESIGN

Our model is design using matlab simulink toolbox, so System Generator tool. it provides direct support for MATLAB through the MCode block. In this block you can directly applies input values to an M-function for evaluation using Xilinx's fixed-point data type. The evaluation is done once for each sample period. The block is capable of keeping internal states with the use of persistent state variables. The input ports of the block are determined by the input arguments of the specified M-function and the output ports of the block are determined by the output arguments of the M-function. The block provides a convenient way to build finite state machines, control logic, and computation Heavy systems.

Next step onward you must have installed Matlab simulink and search for Xilinx block. The significance is that the Xilinx blocks are the only blocks that can eventually be synthesized, placed and routed, and programmed into the FPGA. Xilinx blocks are essentially a Simulink version of all the cores in Xilinx Core Generator. With the help of System generator high level DSP algorithm design with FPGA implementation you can create internal core for simulink m-file so you can download m-file into the Xilinx Spartan – II FPGA model kit.

### SIMULINK RESULTS

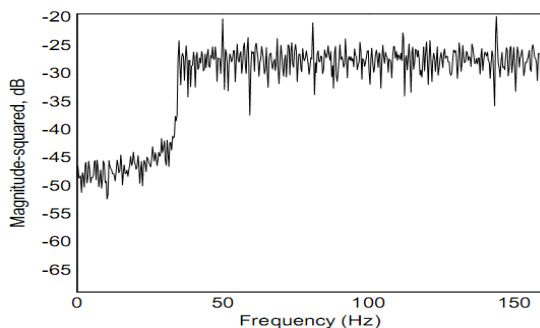


Figure 2

Figure 1

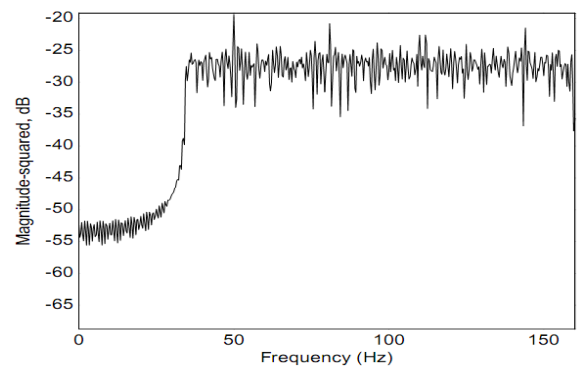


Figure 3

Implementing the specified design in SIMULINK, the output of the pulse shaping filter (Fig 1) and the output of the transmitter (Fig 2) are obtained.

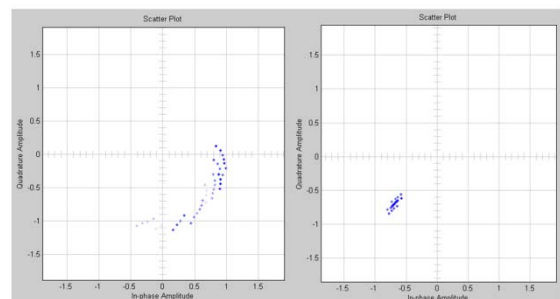


Figure 4

Here using SIMULINK you can observe the scattering plot of signal of I/Q mapper. next stage is result of image transmission through Wi-max.

- [6] J. Wang, "Fundamentals of erbium-doped fiber amplifiers arrays (Periodical style—Submitted for publication)," *IEEE J. Quantum Electron.*, submitted for publication.

## 1) INPUT



## 2) OUTPUT



## CONCLUSION

The MATLAB SIMULINK /SYSTEM GENERATOR ALSO XILINK ISE SUITE proves to be an easily modifiable platform for creating a WiMAX simulation model and transmit a data as image. first implementing in SIMULINK, install xilinx ISE suite then through system generator m-file loaded in the hard ware finally, verifying the hard-ware produce signal with the simulation, ensures that the plat-form is thoroughly tested and producing the correct result..

## REFERENCES

- [1] G. O. Young, "Synthetic structure of industrial plastics (Book style with paper title and editor)," in *Plastics*, 2nd ed. vol. 3, J. Peters, Ed. New York: McGraw-Hill, 1964, pp. 15–64.
- [2] W.-K. Chen, *Linear Networks and Systems* (Book style). Belmont, CA: Wadsworth, 1993, pp. 123–135.
- [3] H. Poor, *An Introduction to Signal Detection and Estimation*. New York: Springer-Verlag, 1985, ch. 4.
- [4] B. Smith, "An approach to graphs of linear forms (Unpublished work style)," unpublished.
- [5] E. H. Miller, "A note on reflector arrays (Periodical style—Accepted for publication)," *IEEE Trans. Antennas Propagat.*, to be published.